

J. C. Fabergé

J. C. Fabergé

Fabulous Carl Fabergé

Although most popular knowledge about Fabergé focuses on the creation of the imperial *Easter eggs*, considered the quintessence of his art and commissioned by the Russian imperial family, the Igor Carl Fabergé Foundation decided to offer a different approach by presenting “new discoveries” and little-known pieces as the starting point for this exhibition. By exhibiting more than 120 pieces from private collections (more than 60% of which were produced by C. Fabergé’s workshops), the Igor Carl Fabergé Foundation offers a glimpse into the richness and versatility of the Fabergé workshops in St. Petersburg and Moscow and their influence on their contemporaries.

Many of the pieces have not been shown before in Europe or Switzerland, and some are presented for the first time in this exhibition.

The highlight of the “Fabulous Carl Fabergé” exhibition will certainly be the discovery and presentation of two previously unidentified imperial eggs.

This exhibition could not have taken place without the mobilisation of many collectors who responded enthusiastically and without the active and unfailing support of GemGenève and its partners.

I would like to thank them for their support.

It only remains for me to wish you a pleasant visit to the discovery of Carl Fabergé and his contemporaries.

—*Bernard Ivaldi*, President of the Igor Carl Fabergé Foundation

- 1 **Enamelled "Empress Catherine II 10 roubles coin" brooch, coin dated 1776**
Gold, silver, rubies, rose cut diamonds
Workshop of August Holström, Carl Fabergé firm
Diameter: 3.0 cm
Provenance: Gift from Grand Duke Alexis Alexandrovich to Elizabeth Baletta, prima ballerina at Imperial Mikhailovsky Theatre
Private collection
- 2 **Gem-set "Snowflake" brooch**
Platinum, diamonds
Attributed to A. Holström workshop, Carl Fabergé firm after the design of Alma Pihl
Diameter: 3.2 cm
Private collection
- 3 **Circular "Clover" leaf brooch**
Gold, diamonds, rubis
Workmaster mark illegible
Inventory number: 15932, Carl Fabergé firm
Diameter: 2.8 cm
Provenance: Empress Maria Feodorovna
Private collection
- 4 **Enamelled "Rocaille" brooch**
Gold, diamonds, rubis, enamel, rose cut diamonds
Workshop of Mikhail Perkhin, Carl Fabergé firm
Diameter: 3.0 cm
Private collection
- 5 **Imperial presentation "double-headed eagle" brooch**
Gold, silver, diamonds
Workshop of Henrik Wigström, Carl Fabergé firm
Inventory number: 1418
St. Petersburg, 1903
Length: 4.5 cm
Provenance: Empress Maria Feodorovna of Russia
Palais Royal Hong Kong Ltd Collection
- 6 **Enamelled "Pansy flower" brooch**
Silver, gold, enamel, diamonds
Workmaster: August Hollming, Carl Fabergé firm
Height: 2.8 cm
Private collection
- 7 **Enamelled "Lozenge" brooch**
Gold, silver, diamonds, enamel, original leather fitted box
Inventory number: 3914, Cartier
Length: 3.5 cm
Palais Royal Hong Kong Ltd Collection
- 8 **Gem-set "Ellipsoid" brooch**
Platinum, blue glass, diamonds
Unmarked, attributed to Chaumet
Inscription: "Dec. 25. 1911"
Length: 4.0 cm
Private collection
- 9 **Imperial presentation "Double Chiffres" brooch**
Gold, silver, diamonds, calibrated sapphires
Workmaster: Carl Hahn, St. Petersburg 1906
Cost: 350 roubles
Length: 3.7 cm
Provenance: Gift from Emperor Nicolas II and Alexandra Feodorovna to Miss Bompard, wife of the French Ambassador to Russia, Maurice Bompard. This gift is mentioned in the memoirs of Maurice Bompard "My Embassy in Russia. 1903-1908"
Palais Royal Hong Kong Ltd Collection
- 10 **Gemset, enamelled "Treillis" brooch**
Silver, gold, diamonds, enamel
Workmaster: Carl Bok, St. Petersburg, c.1890
Length: 5.0 cm
Private collection
- 11 **Enameled "Anemone" pendant-brooch**
Gold, diamond, painted enamel
Unmarked, probably from Russia, c.1900
Width: 3.0 cm
Private collection
- 12 **Jewelled letter opener**
Gold, cachalong, rubis; agate blade
Workshop of Erik Collin, Carl Fabergé firm, St. Petersburg
Length: 16.0 cm
Private collection
- 13 **Gold "Avant-Garde" brooch**
Gold
Workmaster: IF (Ivan Flink), Moscow, before 1899, probably for Fabergé or Bolin
Diameter: 3.3 cm
Private collection
- 14 **Silver "Avant-Garde" canteen trunk**
Silver
Workmaster: EK (possibly Erik Kollin), St. Petersburg, c.1890
Length: 19.5 cm
Private collection
- 15 **Enamelled "Orchid flower" brooch**
Gold, silver, diamonds, enamel
Workmaster: Georges Le Turcq, Paris, c.1890
Height: 7.0 cm
Private collection
- 16 **Imperial presentation "double-headed eagle"**
Gold, rose cut diamonds
Original red leather box from the imperial

1



2



3



4



5



6



7



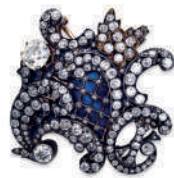
8



9



10



11



12



13



14



15



16



17



18



19



20



- “Cabinet”, attributed to Carl Fabergé firm,
St. Petersburg, c.1913
Length: 4.2 cm
Palais Royal Hong Kong Ltd Collection
- 17 **Jewelled “White mistletoe” cigarette-case**
Silver, gold, rubies, sapphire
Carl Fabergé’s Moscow branch
Inventory number: 11544
Height: 9.0 cm
Private collection
- 18 **Plain silver “1910 ball account” cigarette-case**
Silver, cabochon sapphire
Fabergé’s Moscow branch workshops,
Moscow, 1910
Inventory number: 15748
Height: 9.4 cm
Private collection
- 19 **Imperial presentation cigarette-case
“Minni 1897”**
Silver, gold, diamond, rubies, sapphire
In the original box from imperial “Cabinet”
Fabergé’s workshops, Moscow 1897
Inventory number: 11544
Height: 7.5 cm
Provenance: Empress Maria Feodorovna of
Russia better known to her family as “Minni”
Private collection
- 20 **Enamelled cigarette-case**
Silver-gilt, fuchsia colour enamel on a
guilloché ground, rose cut diamonds
Workshop of August Hollming, Carl
Fabergé firm, St. Petersburg, c.1900
Inventory number: 23841
Length: 6.0 cm
Palais Royal Hong Kong Ltd Collection
- 21 **Silver “Souvenir” tinder cord cigarette case**
Silver, gold, cabochon sapphire, enamel, silk
Workshop of August Hollming, Carl
Fabergé firm, St. Petersburg, 1900
Gift from friends to A. Duard (artist of
Mikhailovski Theatre), the 18 March 1900
Height: 10.5 cm
Private collection
- 22 **Enamelled “Hexagonal” brooch**
Gold, platinum, rose cut diamonds, enamel
Cartier, Paris, c.1910
Length: 4.9 cm
Palais Royal Hong Kong Ltd Collection
- 23 **Jewelled, gold “Samorodok” cigarette case**
Gold enamel, sapphire
- Workshop of August Holmström, Carl
Fabergé firm
Height: 9.5 cm
Private collection
- 24 **Jewelled cigar holder**
Silver, gold, cabochon sapphire
Workmaster Alexander Chailloux, Cartier
supplier on smoking articles, Paris, c.1910
Length: 18.0 cm
Private collection
- 25 **Art nouveau enamelled cigarette case
“Hogweed” Silver enamel**
Workmaster: Konstantin Linke, Bolin firm
St. Petersburg, c.1900
Width: 9.0 cm
Private collection
- 26 **Enamelled “St. Andrew order” cigarette-case**
Silver, gold, enamel
Workmaster: МП, St. Petersburg, c.1890
Height: 9.0 cm
Private collection
- 27 **Jewelled hand seal**
Gold, nephrite, enamel
In box marked “Noble & Co, Русское
изделие, Haymarket London”, attributed
to Carl Fabergé firm
Height: 6.5 cm
Private collection
- 28 **Jewelled nephrite gold hand seal**
Gold, nephrite, rubies, pearls
Workshop of Mikhail Perkhin, Carl
Fabergé firm
Matrix engraved with the coat of arms
of Gorchakov’s family
Height: 12.3 cm
Palais Royal Hong Kong Ltd Collection
- 29 **Enamelled hand seal**
Silver, gold, amethyst cabochon, enamel
In leather box marked: “Noble & Co,
Русское изделие, Haymarket London”,
attributed to Carl Fabergé firm
Height: 7.0 cm
Private collection
- 30 **Heart-shaped bell-push**
Silver-gilt, gold, enamel, pearls, chalcedony
Workshop of Mikhail Perkhin, Carl
Fabergé firm
Provenance: Grand Duchess Elena
Vladimirovna and Nicolas Prince of Greece
Width: 5.0 cm

21



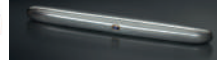
22



23



24



25



26



27



28



29



30



31



32



33



34



35



36



37



38



39



40



- 31 **Circular bell push “Three turtles”**
Gold, garnet, rose cut diamonds, hardstone
Inventory number: 553, Carl Fabergé firm
Diameter: 8.4 cm
Provenance: Empress Maria Feodorovna of Russia
Palais Royal Hong Kong Ltd Collection
- 32 **Circular enamelled bell-push**
Silver-gilt, 88 standard silver, gold, amethyst, enamel
Workshop of Henrik Wigström, Carl Fabergé firm
Inventory number: 23816
Diameter: 5.5 cm
Private collection
- 33 **Spherical enamelled bell push**
Silver, green enamel over a guilloché ground, moonstone cabochon, pearl hardstone
Inventory number: 1497, Carl Fabergé firm
Length: 6.5 cm
Private collection
- 34 **Gem-set, engraved sapphire pectoral icon of Virgin with Child, with filigree enamelled chain**
Gold, silver, rose cut diamonds, pearls, enamel, 49.0 ct. Ceylan sapphire
Workshop of Feodor Ruch, Carl Fabergé firm
Icon: 4.3 cm
Chain: 169.0 cm
Palais Royal Hong Kong Ltd Collection
- 35 **Bonbonnière in the form of Russian seven-string guitar, carved from a single stone of carnelian agate**
Cornaline, gold, pearls, enamel
Inventory number: 54223
Attributed to Mikhail Perkhin's workshop, Carl Fabergé firm
Length: 10.2 cm
Private collection
- 36 **Large plain silver kettle with stand and its bumer**
Inventory number: 23184, Carl Fabergé's Moscow workshops, Moscow, 1901
Height: 24.0 cm
Private collection
- 37 **Enamelled belt buckle**
Silver, platinum, rose cut diamonds
Inventory number: 664
Workmaster: Eugène Bako
Cartier length: 7.5 cm
Palais Royal Hong Kong Ltd Collection
- 38 **Jewelled tripod photo frame**
Silver-gilt, gold, rose cut diamonds, amethysts, green enamel on a guilloché ground
Workshop of Heinrich Yahr (Carl Fabergé firm) for Cartier, Moscow, c.1903
Height: 6.2 cm
Palais Royal Hong Kong Ltd Collection
- 39 **Silver-mounted cylindrical dark blue Wedgwood Jasper vase**
Silver, ceramic
A.B (Abram Beilin), St. Petersburg, c.1900
Height: 11.7 cm
Private collection
- 40 **Enamelled and jewelled Vanity-case**
Silver, gold, rubies, enamel
Workshop of Heinrich Yahr (Carl Fabergé firm) for Cartier
Inventory number: 161, Moscow, c.1907
Length: 5.8 cm
Palais Royal Hong Kong Ltd Collection
- 41 **Jewelled “Boule de Genève” pendant watch**
Silver, gold, rose cut diamonds, pearls, enamel
Workshop of Heinrich Yahr (Carl Fabergé firm) for Cartier, c.1910
Diameter: 2.3 cm
Palais Royal Hong Kong Ltd Collection
- 42 **Memorial plate for the “Pantera” submarine**
Silver
1 CA (First Silver Artel), Carl Fabergé firm, St. Petersburg, 1914
Length: 10.0 cm
Private collection
- 43 **Medieval style miniature foldable tripod travel candle holder**
Silver, cabochons garnets
Workshop of Erik Collin, Carl Fabergé firm, St. Petersburg, 1880
Height: 6.5 cm
Private collection
- 44 **Rectangular enamelled minutes repeater desk clock**
Silver, gold, enamel, agate
Cartier, Paris, c.1910
Height: 9.0 cm
- 45 **Enamelled silver stand for pen to commemorate “The Romanov Tercentenary” (1613-1913)**
Silver, enamel
French workmaster A.C., probably for Fabergé or Hahn Spurious Hanh's firm

41



42



43



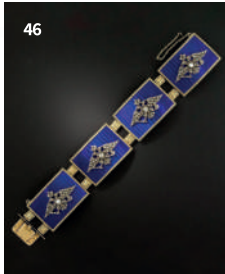
44



45



46



47



48



49



50



51



52



53



54



55



56



58



59



60



61



- marks, Paris, c.1913
Length: 22.0 cm
Private collection
- 46 **Enamelled “double-headed eagles” bracelet**
Gold, silver, rose cut diamonds, deep blue enamel on a guilloché ground
French workmaster P?, probably for Fabergé or Bolin, Paris, c.1890
Width: 6.0 cm
Palais Royal Hong Kong Ltd Collection
- 47 **Cigar lighter in the form of a “Sphinx”**
Silver, red marble
Workshop of Isaak Rappoport, Carl Fabergé firm, St. Petersburg, c.1890
Length: 13.5 cm
Private collection
- 48 **Circular enamelled powder compact**
Silver-gilt, enamel
Workshop of Henrik Wigström, Carl Fabergé firm
Inventory number: 24960
Diameter: 4.0 cm
Private collection
- 49 **Jewelled cylindrical perfume bottle**
Gold, diamonds, enamel
Workshop of Mikhail Perkhin, Carl Fabergé firm
Length: 6.5 cm
Palais Royal Hong Kong Ltd Collection
- 50 **Enamelled oblong gold needle holder**
Gold, enamel, diamonds
Workshop of Mikhail Perkhin, Carl Fabergé firm
Length: 5.9 cm
Private collection
- 51 **Tripod barometer**
Silver-gilt, gold, opals, enamel
Workmaster: Mathey & Cie for Cartier, Paris, 1908
Height: 14.5 cm
Palais Royal Hong Kong Ltd Collection
- 52 **Enamelled vase shaped inkwell**
Silver-gilt, enamel
Workmaster: J.C. Joseph Chaumet firm, Paris, c.1890
Height: 9.0 cm
Private collection
- 53 **Gem-set “Fan” shaped pendant**
Platinum, diamonds, enamel
Attributed to Carl Fabergé firm,
St. Petersburg, c.1910
Height: 5.0 cm
Private collection
- 54 **Enamelled barometer-on-board clock**
Silver-gilt, gold, enamel
Cartier, Paris, 1907
Length: 14.0 cm
Palais Royal Hong Kong Ltd Collection
- 55 **Historical gold pectoral diptych icon of our Lady of Kazan and St. Alexander Nevsky**
Gold
Height: 5.0 cm
Provenance: Gift from Ekaterina Dolgoroukova to Emperor Alexander II
One side of an icon is inscribed in Cyrillic: “To Beloved Monarch, 19 February 1880”; the other side is inscribed in old Slavonic: “I place all my hope in You, Mother of God, keep him under Your shelter”
Ekaterina (Katia) Dolgoroukova was a long-time mistress of Tsar Alexander II of Russia. In July 1880 as hismorganatic wife, she was given the title of Princess Yurievskaya
She became a widow with the assassination of Emperor Alexander II on 13 March 1881
Probably by Fabergé or Bolin
Private collection
- 56 **Jewelled rectangular, minutes repeater clock**
Silver-gilt, gold, amethyst cabochons
Cartier, Paris, 1907
Height: 9.5 cm
Palais Royal Hong Kong Ltd Collection
- 57 **Sealing wax case**
Silver-gilt, gold, enamel on *guilloché* ground
Original Cartier’s leather box, Paris, c.1908
Length: 14.6 cm
Palais Royal Hong Kong Ltd Collection
- 58 **Ovoid enamelled compact powder case**
Gold, silver 88 standard enamel on a *guilloché* ground
Workshop of Feodor Afanasiev, Carl Fabergé firm
Inventory number: 20298
Height: 3.1 cm
Private collection
- 59 **Jewelled whip handle marked “Le Mordant 1907”**
Silver-gilt, gold, rose cut diamonds, moonstone, enamel
“Le Mordant 1907” Jockey Club winner

62



63



64



65



66



67



68



69



70



71



72



73



74



75



76



77



78



79



- in 1907, Cartier, Paris, 1907
Height: 7.3 cm
Provenance: Maurice Ephrussi (1849-1916), banker, art collector
Palais Royal Hong Kong Ltd Collection
- 60 **Jewelled large jadeite cane handle**
Gold, silver, rose cut diamonds, enamel
Workshop of Mikhail Perkhin, Carl Fabergé firm, St. Petersburg, c.1901
Inventory number: 4649
Height: 7.0 cm
Private collection
- 61 **Enamelled, gold-mounted bowenite parasol handle**
Workshop of Mikhail Perkhin, Carl Fabergé firm, St. Petersburg, c.1898
Inventory number: 59958
Height: 7.5 cm
Private collection
- 62 **Enamelled circular cuff links**
Gold, enamel
Workshop of Edward Helenius, Carl Fabergé firm, St. Petersburg, c.1903
Inventory number: 7744
Diameter: 1.4 cm
Private collection
- 63 **Enamelled buttons**
Gold, silver, diamonds, pink enamel
Workshop of August Holström, Carl Fabergé firm, St. Petersburg, c.1900
Inventory number: 73005
Diameter: 1.3 cm
Palais Royal Hong Kong Ltd Collection
- 64 **Diamonds set triangular miniature frame**
Silver, gold, rose cut diamonds
Workshop of Victor Aarne, Carl Fabergé firm
Inventory number: 3081
Width: 4.5 cm
Private collection
- 65 **Circular silver box depicting World War I scene with “The Sisters of Mercy”**
Silver
Workshop of Rudolf Weide, St. Petersburg, 1914
Diameter: 6.0 cm
Private collection
- 66 **Silver ovoid shape, salt and pepper shakers, inscribed “Baby 97”**
Silver
Carl Fabergé’s Moscow workshops
- Provenance: In all probability a gift to Grand Duchess Olga Alexandrovna (1882-1960), Alexander III’s daughter, on the occasion of her 15th anniversary
Height: 4.0 cm
Private collection
- 67 **Enamelled *bonbonnière*, set with Catherine II 10 roubles coin dated 1776**
Gold, enamel
Workmaster F.C. (Cyrillic GS) and Nilouram
Diameter: 5.8 cm
Private collection
- 68 ***Bonbonnière*, set with Catherine II 1 rouble coin dated 1782**
Gold, red enamel
Workshop of Anders Nevalainen, Carl Fabergé firm
Inventory number: 3477
Diameter: 6.5 cm
Private collection
- 69 **Oblong silver tray with handles supporting griffins**
Silver
Carl Fabergé’s Moscow workshops
Inventory number: 40525
Length: 36.8 cm
Private collection
- 70 **Large silver “Avant-Garde” tray**
Workmaster: M. Linke, Bolin, Moscow, 1889
Diameter: 32.7 cm
Private collection
- 71 **Gem-set triangular pendant**
Silver, gold, rose-cut diamonds
Workmaster illegible, Moscow, c.1900
Height: 4.6 cm
Private collection
- 72 **Group of miniature Easter eggs**
Acorn egg, gold, rose cut diamonds
French importation mark
Width: 1.4 cm
Gold-Red Cross, marked K.Ф. (Fabergé), Moscow, c.1915
Height: 1.0 cm
Gold, rubis, garnet
Width: 1.1 cm
Private collection
- 73 **Jewelled two colours gold medallion in the shape of a bell**
Gold, sapphire
Cyrillic initials: “X.B.” (“Christ is Risen”)

80



82



84



83



85



86



87



88



89



90



91



92



93



95



96



97



98



99



- Workshop of Feodor Afanasiev, Carl Fabergé firm
Height: 3.2 cm
Private collection
- 74 **Cartier silver plaque depicting 16 guilloché enamel samples**
Silver, enamel
Paris, c.1900
Height: 14.5 cm
Palais Royal Hong Kong Ltd Collection
- 75 **Silver triangular Cartier clock**
Silver, gold, enamel
Paris, c.1908
Height: 12.0 cm
Palais Royal Hong Kong Ltd Collection
- 76 **Important jewelled silver swan**
Silver rubis cabochons
Workshop of Koch-Bergfeldt, Bremen, attributed to Carl Fabergé firm, importation marks for Russia, c.1900
Inventory number: 119660
Length: 48.0 cm
Weight: 4.2 kg
Provenance: Morozov Family
Engraved text in Russian: "To Arsene Abrahamovitch and Vera Sergievna MOROZOV with heartfelt wishes on the occasion of the wedding and the housewarming party from the associated partners of the Tver factory, December 1900"
Private collection
- 77 **Cactus**
Nephrite, brown jasper, gold
Probably by Berquin-Varangoz, Paris, c.1912
Height: 13.5 cm
Private collection
- 78 **Marabout**
Nephrite, gold, rose cut diamonds
Probably by Berquin-Varangoz, Paris, c.1912
Height: 11.0 cm
Private collection
- 79 **Gold enamelled bangle**
Gold, enamel
Workshop of Faliz, "Moult aime qui attend", Paris, c.1875
Width: 5.5 cm
Private collection
- 80 **Cloisonné, polychrome enamel kovch**
Silver-gilt, enamel
Workshop of Feodor Rückert, Carl Fabergé firm, Moscow, c.1900
Inventory number: 2399
Length: 10.0 cm
Private collection
- 81 **Cloisonné, polychrome enamel perfume bottle**
Silver-gilt, enamel
Workshop of Feodor Rückert, Carl Fabergé firm, Moscow, c.1905
Height: 5.7 cm
Private collection
- 82 **Tripod enamelled and jewelled salt cellar**
Silver standard 88, enamel, amethyst, *aigue-marine*, sapphire
Workmaster: Sergueï Vachkov, Olovianichnikov & Sons, Moscow, 1911
Height: 7.0 cm
Private collection
- 83 **Enamelled gold pencil holder**
72 standard gold, enamel
Workshop of Vladimir Soloviev, Carl Fabergé firm
Height: 12.0 cm
Private collection
- 84 **Enamelled two-sided pendant**
Silver, gold, diamonds, enamel
Workshop of August Holmström, Carl Fabergé firm
Diameter: 2.3 cm
Private collection
- 85 **Enamelled gold bookmark**
Gold, enamel, rock crystal
Original fitted leather box
Workshop of Mikhail Perkhin, Carl Fabergé firm, St. Petersburg, c.1900
Inventory number: 2976
Provenance: Empress Maria Fedorovna of Russia
Private collection
- 86 **Medieval style, circular jewelled and enamelled silver box**
Silver, cabochons garnets, enamel
Workmaster: A. J., Paris, c.1880
Diameter: 5.7 cm
Private collection
- 87 **Enamelled "Pandora's box" Frame**
Silver-gilt, enamel
Workmaster: Israel Roukhomovsky, Paris, c.1910
Height: 33.0 cm
Palais Royal Hong Kong Ltd Collection
- 88 **Silver travelling toilette set**

100



101



102



103



104



105



106



107



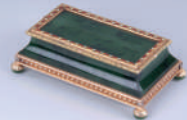
108



109



110



111



116



117



118



120



121



123



- Moscow's Fabergé workshops, Moscow, c.1880
Talcum powder dispenser
Height: 8.3 cm
Private collection
- 89 **Two colour gold jewelled inkwell**
Gold, rose cut diamonds, cabochons
rubis, cabochons sapphires
Workmaster: Frederich Koechli,
St. Petersburg, c.1900
Width: 9.0 cm
Palais Royal Hong Kong Ltd Collection
- 90 **Gilded bronze sculpture "Marie with Nutcracker"**
Bronze, red marble
Sculptor: Boris Frödman-Cluzel
Inscriptions in Cyrillic reading:
"Nutcracker ballet. Mariinsky Theatre.
Sculptor Boris Frödman-Cluzel",
St. Petersburg, 1911
Width: 16.5 cm
Private collection
- 91 **Plique-à-jour enamel silver bookmark**
Attributed to Imperial Stroganov School,
Moscow, c.1913
Length: 11.2 cm
Private collection
- 92 **Hard stones elements of "Raspberry" study**
Nephrite, rhodonite
Attributed to Carl Fabergé firm
Private collection
- 93 **Hard stone elements of "Narcissus"
flower study**
Nephrite, cacholong
Attributed to Carl Fabergé firm
Private collection
- 94 **Cloisonné enamel Whist game tokens**
Gold, enamel, boucheron
Paris, c.1890
Diameter: 3.5 cm
Width: 6.5 cm
Private collection
- 95 **Silver Icon lamp in the form of a cherub**
Silver
Marked "Vladimirov", St. Petersburg, c.1910
Height: cherub: 10.5 cm, chain: 54.0 cm
Private collection
- 96 **Circular Gold enamelled brooch**
Gold, silver, rose cut diamonds, rubis
Fabergé's Moscow workshops
Diameter: 3.0 cm
Private collection
- 97 **Brooch "Flower"**
Diamonds and rubis "Flower" brooch
Gold, silver, diamonds, rubis
Attributed to I. Marchak, Kiev, c.1910
Inventory number: 2516 00S
Private collection
- 98 **Jewelled agate Easter egg**
Gold, rubis cabochons, agate, unmarked
Attributed to Cartier, Paris, c.1908
Height: 2.2 cm
Palais Royal Hong Kong Ltd Collection
- 99 **Gold, nephrite and diamond cigarette-case**
Gold, nephrite, diamond, enamel
Workmaster: César & Sthummer, Cartier,
Paris, 1907
Height: 9.0 cm
Palais Royal Hong Kong Ltd Collection
- 100 **Gem-set tourmaline brooch**
Silver, gold, tourmaline, rose-cut
diamonds, pearls
Workmaster: Victor Finikov, Bolin
Width: 4.3 cm
Private collection
- 101 **Metal plaque depicting 144 colour
samples of translucent enamel over
varying guilloché grounds**
Carl Fabergé firm, St. Petersburg, c.1890
Width: 30.0 cm
Mirabaud Collection
- 102 **Massive nephrite Elephant, set with
diamond eyes**
Inventory number: 23097
Carl Fabergé firm, St. Petersburg, c.1900
Height: 12.4 cm
Mirabaud Collection
- 103 **Large silver "Trompe l'œil" tea caddy**
The cover engraved in Russian "K. S. Popov
Brothers, tea from Russia", Carl Fabergé's
Moscow workshops, Moscow, c.1890
Width: 14.0 cm
Mirabaud Collection
- 104 **Large nephrite model of a Carp**
Nephrite, cabochon moonstone
Carl Fabergé firm, St. Petersburg, c.1900
Inventory number: 37544/F1500
In the original Fabergé wood box
Length: 23.0 cm
Mirabaud Collection
- 105 **Two-coloured gold mounted nephrite
and guilloché enamel hand seal**



- Nephrite, gold, carnelian agate, enamel
Workshop of Henrik Wigström, Carl Fabergé firm
In a later fitted wood case
Height: 3.3 cm
Mirabaud Collection
- 106 **Gold, jewelled and enamelled nephrite kovch**
Nephrite, gold, pearl, rose cut diamonds
Workmaster marks illegible, Carl Fabergé firm
Inventory number: 9771
In the original wooden case stamped
“Fabergé St. Petersburg, Moscow, Odessa”
Length: 11.0 cm
Mirabaud Collection
- 107 **Silver-gilt mounted cylindrical nephrite vase**
Nephrite, silver-gilt
Workshop of Mikhail Perkhin, Carl Fabergé firm
Height: 7.8 cm
Mirabaud Collection
- 108 **Spherical gold-mounted nephrite inkwell**
Gold, nephrite
Workshop of Mikhail Perkhin, Carl
Fabergé firm, St. Petersburg, c.1890
Height: 6.0 cm
Mirabaud Collection
- 109 **Nephrite, enamel and two coloured gold
mounted perpetual calendar**
Nephrite, gold, diamonds, pearls, enamel
Workshop of Mikhail Perkhin, Carl
Fabergé firm, St. Petersburg, before 1899
Length: 12.1 cm
Illustrated in *Fabergé, Imperial Craftsman
and his World*, G. de Habsburg-Booth-
Clibborn, 2000, #337, p.166
Illustrated in *Fabergé/Cartier, Rivalen am
Zarenhof*, Munich, 2003, #12
Exhibitions: 2000: “Fabergé, Imperial
Craftsman and his World”, Wilmington,
Delaware; 2004: “Fabergé/Cartier Rivalen
am Zarenhof”, Kunsthalle, Munich
Mirabaud Collection
- 110 **Nephrite, enamel and two colour gold
mounted stamp box**
Nephrite, gold, enamel
Workshop of Mikhail Perkhin, Carl
Fabergé firm, St. Petersburg, before 1899
Length: 9.4 cm
Illustrated in *Fabergé, Imperial Craftsman
and his World*, G. de Habsburg-Booth-
Clibborn, 2000, #337, p.166
Illustrated in *Fabergé/Cartier, Rivalen am
Zarenhof*, Munich, 2003, #12
- Exhibitions: 2000: “Fabergé, Imperial
Craftsman and his World”, Wilmington,
Delaware; 2004: “Fabergé/Cartier Rivalen
am Zarenhof”, Kunsthalle, Munich
Mirabaud Collection
- 111 **Gold medallion of “Veronica” and cross**
Gold, enamel
For the commemoration of 1888 Imperial
train accident near Borki station
Medallion workmaster: E. Kortmann, Carl
Fabergé firm
Provenance: G. I. Hirsch
Height: 3.8 cm
Orthodox cross
Workmaster: MC (unidentified)
Height: 4.0 cm
Mirabaud Collection
- 112 **Silver cloisonné enamel “chinoiserie” vide-poche**
Silver, enamel
Workmaster: Frederic Boucheron, Paris
Height: 9.0 cm
Palais Royal Hong Kong Ltd Collection
- 113 **Sapphire bracelet**
Silver, gold, cabochons sapphires, rose
cut diamonds
St. Petersburg, c.1890
Length: 19.5 cm
Private collection
- 114 **Polished gold cigarette case**
Gold, garnet, tinder cord
Workshop of August Hollming, Carl
Fabergé firm, St. Petersburg, c.1910
Private collection
- 115 **Inkwell “Cat playing with mouses”**
Silver
Workmaster: Frédéric Boucheron, Paris, c.1900
Width: 6.5 cm
Palais Royal Hong Kong Ltd Collection
- 116 **Circular enamelled box**
Silver-gilt, enamel
Workmaster: E. Feuillâtre
Diameter: 9.8 cm
Palais Royal Hong Kong Ltd Collection
- 117 **Jewelled vodka cup**
Silver-gilt, garnets, rock crystal
Workmaster: Edouard Helenius, Carl
Fabergé firm
Cyrillic engraving: “Chicken drinks too”
Height: 5.0 cm
Provenance: Gift from Grand Duke Alexis



Alexandrovich to Elizabeth Baletta, *prima ballerina* at Imperial Mikhailovsky Theatre
Private collection

118 Coat of arms of Imperial Russia

Gilded bronze

Engraver: G. Jackson, 22 rue de la Boétie, supplier of Imperial Court of Russia for the Coronation of Nicolas II in 1896, Paris, 1896
Height: 9.3 cm

Private collection

119 “Tsesarevich” egg, 1905

Gold, diamonds, sapphires, silver-gilt, enamel, wood, silk

Strawberry red enamelled double-leafed egg made of the highest silver standard (91 zolotniks, corresponding to 950 sterling silver)

Each leaf is decorated with a different *guilloché* pattern. The egg opens lengthwise with chrysoprase buttons (one chrysoprase is missing).

One side of the egg is decorated with Cyrillic letters “X.B.” (“Christ is Risen”), and the other with the old Slavonic letter “A” under the Imperial Crown of the Russian Empire, which together form the monogram of Tsesarevich Alexei Nikolaevich (1904-1918), granted to him from the day of his birth.

The egg is made in the workshops of the Imperial Stroganov School, as evidenced by the “I.S.U” maker’s mark, as well as a silk lining with the logo of the School.

The date of manufacture is 1904-1905, which is confirmed by the assay mark in the form of a woman’s head facing to the left (1899-1908), as well as the fact that an enamel workshop was opened only in 1902. There has been a long tradition of a close cooperative relationship between the Imperial Stroganov School and the firm of Carl Fabergé. The Fabergé firm, as always, supplied the manufacturer with its drawings when placing its orders.

The 6.3 cm height egg contains a surprise — a strawberry red enamelled egg-shaped miniature golden wax seal stamp measuring only 2.5 cm. The body of the seal is adorned with a rose-cut diamonds and cabochon sapphires forming a stylised question mark. The matrix is formed with an enamelled gold coin

of the Empress Elizaveta Petrova. The hollow handle of the seal most likely serves as a reservoir for the storage of holy water.

Provenance: Sotheby’s London 1966, lot 112; Bonhams London 2009, lot 146A; Sotheby’s London 2016, lot 351

120 “Nephrite” Grand Duchess egg, 1904

Tsar Nicolas II gift to his aunt and sister-in-law Grand Duchess Elizaveta Feodorovna (1864-1918) on the occasion of Easter in the year of her 40th birthday

121 “Bouquet of Yellow Lilies” clock-egg, 1893

Tsar Alexander III gift to Dutch physician D’ Johann Georg Mezger (1831-1901) for medical treatment provided to members of the Imperial Family following Imperial train crash in 1888

Provenance: D’ J.G.Mezger family
Exhibitions: 1992: “Fabulous Epoque of Fabergé”, Catherine Palace of the Tsarskoe Selo museum, St. Petersburg; 2000: “Fabergé, Imperial Craftsman and his World”, Wilmington, Delaware; 2017: “The Revolution of 1917. Russia and Switzerland”, National Museum, Zürich

122 Sculptural bronze portrait of Anna Pavlova (1881-1931) in Bacchanalia

Sculptor: Boris Frödman-Cluzel (1878-1959)
Lost wax casting: A. A. Hébrard
St. Petersburg, 1911
Height: 17.5 cm
Private collection

123 Sculptural bronze portrait of Ida Rubinstein (1885-1960) performing in Salome

Sculptor: Boris Frödman-Cluzel (1878-1959)
Lost wax casting: A. A. Hébrard
St. Petersburg, 1909
Height: 15.0 cm
Private collection

124 Sculptural bronze portrait of Tamara Karsavina (1885-1978) in Iphigenia

Sculptor: Boris Frödman-Cluzel (1878-1959)
Lost wax casting: A. A. Hébrard
St. Petersburg, 1910
Provenance: #16 in the catalogue of the “Sculptures de M. Boris Frödman-Cluzel, Les Artistes de la danse Russes et Françaises” exhibition at A.A. Hébrard’s Gallery, 8 rue Royale, Paris, from 27 May to 25 June 1910

124



125



129



127



128



130



131



132



134



135



136



137



138



139



- Height: 16.0 cm
Galerie Ary Jan, Paris
- 125 **Sculptural bronze portrait of Vaclav Nijinski (1889-1950) in arabesque position**
Sculptor: Boris Frödman-Cluzel (1878-1959)
Lost wax casting: A. A. Hébrard
St. Petersburg, 1909
Height: 26.0 cm
Provenance: #9 in the catalogue of the "Sculptures de M. Boris Frödman-Cluzel, Les Artistes de la danse Russes et Français" exhibition at A.A. Hébrard's Gallery, 8 rue Royale, Paris, from 27 May to 25 June 1910
Private collection
- 126 **Sculptural bronze portrait of Ludmila Schollar (1888-1978) performing the role of "Jewish dance" from Cleopatra ballet**
Sculptor: Boris Frödman-Cluzel (1878-1959)
Lost wax casting: A. A. Hébrard
St. Petersburg, 1910
Provenance: #13 in the catalogue of the "Sculptures de M. Boris Frödman-Cluzel, Les Artistes de la danse Russes et Français" exhibition at A.A. Hébrard's Gallery, 8 rue Royale, Paris, from 27 May to 25 June 1910
Height: 16.0 cm
Galerie Ary Jan, Paris
- 127 **Sculptural bronze portrait of Bronislava Nijinska (1891-1972) in the role of "Almea" in Scheherazade**
Sculptor: Boris Frödman-Cluzel (1878-1959)
Lost wax casting: A. A. Hébrard
St. Petersburg, 1910
Private collection
- 128 **Sculptural bronze portrait of Maria Gorchkova in Arabesque in point shoes**
Lost wax casting: A. A. Hébrard
Provenance: #14 in the catalogue of the "Sculptures de M. Boris Frödman-Cluzel, Les Artistes de la danse Russes et Français" exhibition at A.A. Hébrard's Gallery, 8 rue Royale, Paris, from 27 May to 25 June 1910
Galerie Ary Jan, Paris
- 129 **Sculptural bronze portrait of Jeanne Schwarz (1887-1970)**
Sculptor: Boris Frödman-Cluzel (1878-1959)
Lost wax casting: A. A. Hébrard
St. Petersburg, 1910
- Provenance: #9 in the catalogue of the "Sculptures de M. Boris Frödman-Cluzel, Les Artistes de la danse Russes et Français" exhibition at A.A. Hébrard's Gallery, 8 rue Royale, Paris, from 27 May to 25 June 1910
Height: 28.0 cm
Galerie Ary Jan, Paris
- 130 **Sculptural bronze portrait of Aida Boni (1880-1974) on pointe in attitude position**
Sculptor: Boris Frödman-Cluzel (1878-1959)
Lost wax casting: A. A. Hébrard
St. Petersburg, 1910
Provenance: #12 in the catalogue of the "Sculptures de M. Boris Frödman-Cluzel, Les Artistes de la danse Russes et Français" exhibition at A.A. Hébrard's Gallery, 8 rue Royale, Paris, from 27 May to 25 June 1910
Height: 25.0 cm
Private collection
- 131 **Sculptural bronze portrait of Mikhail Mordkin (1880-1944) performing "Indian dance" from Bayadere**
Sculptor: Boris Frödman-Cluzel (1878-1959)
Lost wax casting: A. A. Hébrard
St. Petersburg, 1911
Height: 23.0 cm
Private collection
- 132 **Sculptural bronze portrait of Alexandra Balachova (1887-1977) performing in the ballet The Little Humpbacked Horse**
Sculptor: Boris Frödman-Cluzel (1878-1959)
Lost wax casting: A. A. Hébrard
St. Petersburg, 1911
Private collection
- 133 **Sculptural bronze portrait of Vera Fokina (1886-1958) and Mikhail Fokin (1880-1942) in Carnival**
Sculptor: Boris Frödman-Cluzel (1878-1959)
Lost wax casting: A. A. Hébrard
Height: 16.5 cm
Private collection
- 134 **Sculptural bronze portrait of Adolf Bolm (1884-1951) in Polovtsian dances**
Sculptor: Boris Frödman-Cluzel (1878-1959)
Lost wax casting: A. A. Hébrard
Height: 23.5 cm
Private collection
- 135 **Couple performing the Russian dance**
Sculptor: Boris Frödman-Cluzel (1878-1959)



Lost wax casting: A. A. Hébrard
Height: 17.0 cm
Private collection

**136 Sculptural bronze portrait of Isadora
Duncan follower**

Sculptor: Boris Frödman-Cluzel (1878-1959)
Lost wax casting: Carlo Robecchi
Moscow, 1912
Height: 25.5 cm
Private collection

**137 Sculptural bronze portrait of Vladimir
Riabtsev in the role of "Isaak" from *Corsaire***

Sculptor: Boris Frödman-Cluzel (1878-1959)
Lost wax casting: A. A. Hébrard
Moscow, 1913
Height: 21.0 cm
Private collection

**138 Imperial presentation gold "samorodok"
cigarette case**

Gold, rose cut diamonds
Carl Fabergé firm
© Horovitz & Totah

139 Demantoid garnet brooch

gold, silver, rose cut diamonds
Workshop of Erik Kollin, Carl Fabergé firm
Length: 5.2 cm
© Paul Fisher Inc.

140 Circular gold "Trefoil" brooch

Gold, rubis, rose cut diamonds
Workshop of Edward Schramm, for Bolin
or Fabergé firm
Diameter: 2.5 cm
© Faerber Collection.

With the friendly support from



